

Mühlbauer



GARNISH

AUTUMN WINTER 2025/26

GARNISH

Herbst/Winter 2025/26

Die mageren Jahre sind vorbei. Es wird wieder aus dem Vollen geschöpft. Es darf geschmückt, verziert, dekoriert und verschönert werden. Es wird also garniert. Auf Mühlbauer Art. Traditionelle Verschönerungselemente des Huthandwerks wie Kordeln, Bänder, Schnüre und Federn bleiben dabei aber bewusst in den Laden.

Stattdessen tragen die Kopfbedeckungen Riemen, Gurte und Schlingen, wie man sie von Rucksäcken kennt. Cargo-Elemente wie Taschen und Schlaufen zieren eine Reihe von Hüten, wobei diese Funktionen eher auf das Konto der Optik einzahlen. Ein weiteres Modell hat gar einen Henkel am Kopf, zum Tragen. Auch hier, Material und Aufputz im selben Material und Ton.

Fransen sind ein großes Thema. Mal findet man sie am Krempe­nrand oder vertikal am Hut entlanglaufend, mal zieren sie das Schild einer Filzkappe. Selbst in der Strickserie setzen sie sich fort. So werden Schalhauben und Beanies in Tuftoptik gestrickt.

Die Farben nehmen sich zurück. Naturnahe Töne wie Salbei, Steingrau, Erde, und das gräuliche Blau der Donau lassen der Garnitur den Vortritt.

Autumn/Winter 2025/26

The lean years are over. It's time to draw from the full again. It's time to decorate, embellish, and beautify. So, it's all about garnishing. The Mühlbauer way. Traditional decorative elements of hat-making such as cords, ribbons, strings, and feathers, are deliberately set aside.

Instead the headwear is garnished with straps, belts and loops inspired by outdoor accessories such as rucksacks. Utility elements like pockets and belt loops adorn a number of hats, although in a less functional and more decorative manner. One hat even has a handle attached to the top of the crown – so you can carry it with you wherever you go. Both material of the body and trimming match in material and tone.

Fringes are a major theme. Sometimes they appear on the edge of the brim or run vertically up the hat. Sometimes they adorn the visor of a felt cap. Fringing even spreads into the knitwear range. Hood scarves and beanies are knitted in a special tufted look.

The collection's colours are subdued. Natural tones such as sage, stone grey, earth and the greyish-blue of the river Danube allow the garnish to take centre stage.

AUTUMN WINTER 25/26

CLASSICS

TRACHT

PACKAGING

Page **10**

Page **30**

Page **40**

Page **42**



Head band NIKLAS
German rabbit
P25603



Hood scarf HIVER
Wool blend hand-knitted
S25763



Cap BAZ
Velvet felt
M25512



Bucket hat MIO
Waxed ribstop/sherpa velour
S25761





Cap BODE
Loden
S25755

AUTUMN WINTER 25/26



Traveller OTTO SEPP
Fur felt superlight
M25514

CARGO





Cloche RAM
Wool felt light
56–61 cm
M25501



Cloche RAM 23
Wool felt light
56–61 cm
M25502



Forgae cap VIKTOR
Wool felt light
56–59 cm
M25503



Cap BAZ
Fur felt
55–60 cm
M25504



Gentleman's hat GRAF UDO
Fur felt
56–62 cm
M25505



Cap BAZ
Wool felt soft
55–60 cm
M25506



Fold-up hat RESI REI
Wool felt soft
54–59 cm
M25507



Bucket hat DUKE SEPP
Wool felt soft
56–60 cm
M25508



Bucket hat KEN FISHER
Wool felt soft
56–60 cm
M25509

FUR FELT	000 black	021 light grey mélé	042 light grey hairy	071 grey mélé	072 grey hairy	076 steel	081 anthra mélé
082 anthra hairy	131 birch mélé	201 beige mélé	202 beige hairy	211 sand mélé	212 sand hairy	440 fire	480 bordeaux
615 sage	660 loden	701 green mélé	770 fir	851 brown mélé	852 brown hairy	880 santos	895 mocca
960 jeans	970 navy	WOOL FELT LIGHT	000 black	021 light grey mélé	080 anthra	081 anthra mélé	201 beige mélé
370 mustard	390 gold	600 olive	701 green mélé	830 chestnut	851 brown mélé	970 navy	
WOOL FELT SOFT	021 light grey mélé	071 grey mélé	081 anthra mélé	600 olive	750 stone	870 dark brown	

VELOURS





Gentleman's hat GRAF UDO
Velvet felt
56-62 cm
M25510



Cap LUC
Velvet felt
55-61 cm
M25511



Cap BAZ
Velvet felt
55-60 cm
M25512

VELVET FELT



000 black



060 elephant



080 anthra



125 gypsum



270 camel



300 yellow



390 gold



420 coral



430 orange



460 terra



480 bordeaux



535 raspberry



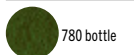
600 olive



660 loden



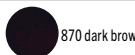
750 stone



780 bottle



835 taupe



870 dark brown



910 ciel



960 jeans



990 dark blue



SUPERLIGHT



Traveller SEPP
Fur felt superlight
56-61 cm
M25513



Traveller OTTO SEPP
Fur felt superlight
56-60 cm
M25514



Cloche PRINZ LIA
Fur felt superlight
56-60 cm
M25515



Cloche RESI LEE
Fur felt superlight
54-60 cm
M25516



Pork pie GRAF THEO
Fur felt superlight
56-62 cm
M25517



Traveller PRINZ OSIP
Fur felt superlight
56-61 cm
M25518



Gentleman's hat UDO
Fur felt superlight
56-62 cm
M25519



Traveller PRINZ FISHER
Fur felt superlight
56-61 cm
M25520

FUR FELT SUPERLIGHT	000 black	005 black hairy	021 light grey mélé	022 light grey hairy	081 anthra mélé	082 anthra hairy	131 birch mélé	
	132 birch hairy	201 beige mélé	202 beige hairy	540 pink	542 pink hairy	570 aubergine	571 aubergine hairy	601 olive mélé
	602 olive hairy	615 sage	617 sage hairy	851 brown mélé	852 brown hairy	921 blue mélé	922 blue hairy	950 royal
	951 royal hairy	970 navy	975 navy hairy					



MELUSINE



Cap BAZ
Melusine felt
55–60 cm
M25521



Cloche NAJA SEPP
Melusine felt
56–59 cm
M25522



Fold-up hat RESI REI
Melusine felt
54–59 cm
M25523

MELUSINE FELT



000 black



020 light grey



080 anthra



102 white hairy



210 sand



270 camel



300 yellow



460 terra



530 lilac



550 fuchsia



555 parma



650 laurel



835 taupe



870 dark brown



990 dark blue

LODEN





Cap HUI
Loden
55-61 cm
S25751



Bucket hat JODA
Loden
55-61 cm
S25752



Cap BAX
Loden
55-61 cm
S25753



Cap BASE
Loden tricolor
M, L
S25754



Cap BODE
Loden
55-61 cm
S25755



Cloche MABLE
Loden
54-60 cm
S25756



Shawl WRAP
Loden
one size
S25757

LODEN	000 black	071 grey mélé	081 anthra mélé	201 beige mélé	460 terra	570 aubergine	615 sage
	660 loden	770 fir	830 chestnut	870 dark brown	915 danube	970 navy	
LODEN TRICOLOR							

WARM & WATERPROOF





Cap ONNI
Waxed ribstop/loden
55–61 cm
S25758



Hood KADLIN
Waxed ribstop/sherpa velour
one size
S25759



Russian AIDAN
Waxed ribstop/sherpa velour
55–61 cm
S25760



Bucket hat MIO
Waxed ribstop/sherpa velour
55–61 cm
S25761



Bucket hat RIKKA
Waxed ribstop/sherpa wool recycled
55–61 cm
S25762

LODEN



000 black



071 grey mélé



081 anthra mélé



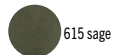
201 beige mélé



460 terra



570 aubergine



615 sage



660 loden



770 fir



830 chestnut



870 dark brown



915 danube



970 navy

SHERPA VELOUR



076 steel



270 camel



460 terra



905 blue

SHERPA WOOL RECYCLED



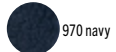
220 natural



600 olive



835 taupe



970 navy

WAXED RIBSTOP



080 anthra



270 camel



600 olive



905 blue



FRINGES



Hood scarf HIVER
Wool blend hand-knitted
one size
S25763



Beanie HELMA
Wool blend hand-knitted
one size
S25764



Beanie ATLAS
Wool blend hand-knitted
one size
S25765



Beanie ALASKA
Wool blend hand-knitted
one size
S25766



Beanie GENESIS
Wool blend hand-knitted
one size
S25767



Beanie TRINITY
Wool blend hand-knitted
one size
S25768

WOOL BLEND HAND-KNITTED



000 black



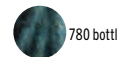
071 grey mélé



201 beige mélé



270 camel



780 bottle



460 terra



960 jeans



FUZZY MELANGE



Head band NANDA
Fuzzy wool mélé hand-knitted
one size
S25769



Cap PIK
Fuzzy wool mélé hand-knitted
one size
S25770



Cloche RIOT
Fuzzy wool mélé hand-knitted
one size
S25771



Fold-up beanie HALTI
Fuzzy wool mélé hand-knitted
one size
S25772



Beanie KIBO
Fuzzy wool mélé hand-knitted
one size
S25773



IRONED SHERPA





Fold-up beanie TORIN
Sherpa velour/sherpa wool
55-61 cm
F25301



Beanie ALPIN
Sherpa velour
54-60 cm
F25302



Head band SNORRE
Sherpa wool
55-61 cm
F25303



Ear muffs JANIS
Sherpa velour
one size
F25304

SHERPA VELOUR



076 steel



270 camel



460 terra



905 blue

SHERPA WOOL



000 black



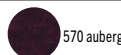
076 steel



270 camel



460 terra



570 aubergine



615 sage



620 pea



905 blue





Ear muffs JANIS
German rabbit
one size
P25601



Russian HALLA
German rabbit
55-61 cm
P25602



Head band NIKLAS
German rabbit
55-61 cm
P25603



Toque ZAZA
German rabbit
55-61 cm
P25604

AUTUMN WINTER CLASSICS





Leather band & lining
Goat leather/printed viscose



Gentleman's hat DUKE
Beaver felt dark
56–62 cm
CM557 (LF)



Gentleman's hat DUKE
Beaver felt light
56–62 cm
CM569 (LF)



Gentleman's hat UDO
Fur felt
56–62 cm
CM536



Trilby KARL
Fur felt/merino brim
55–61 cm
CM506



Trilby KARL
Melusine print
55–61 cm
CM563



Traveller ART LEE
Antelope felt
55–59 cm
CM541



Traveller ART WILL
Antelope felt
56–60 cm
CM585



Traveller NAJA GIGI
Antelope felt
55–60 cm
CM591



Gentleman's hat GRAF THEO H
Antelope felt
56–62 cm
CM528



Gentleman's hat UDO H
Antelope felt
56–62 cm
CM529

ANTELOPE FELT	000 black	060 elephant	080 anthra	130 birch	140 ecru	200 beige	390 gold
421 rouge	460 terra	470 oxblood	540 pink	560 wine	600 olive	780 bottle	835 taupe
870 dark brown	935 cobalt	970 navy	BEAVER FELT DARK	000 black	080 anthra	600 olive	830 chestnut
970 navy	BEAVER FELT LIGHT	200 beige	FUR FELT	000 black	021 light grey mélé	042 light grey hairy	071 grey mélé
072 grey hairy	076 steel	081 anthra mélé	082 anthra hairy	131 birch mélé	201 beige mélé	202 beige hairy	211 sand mélé
212 sand hairy	440 fire	480 bordeaux	615 sage	660 loden	701 green mélé	770 fir	851 brown mélé
852 brown hairy	880 santos	895 mocca	960 jeans	970 navy	MELUSINE PRINT	045 greypard	272 leopard
282 cheetah							



Cap LUC
Fur felt superlight
55–61 cm
CM576



Beret LOLA
Fur felt superlight
55–60 cm
CM577



Traveller ART
Hand-felted wool
55–59 cm
CM574



Beret INSE
Wool felt soft
55–59 cm
CM579



Cloche NAJA LIA
Wool felt suède
55–60 cm
CM590



Traveller RESI LEE
Wool felt light
54–60 cm
CM596



Cap LUC
Wool felt light
55–61 cm
CM593

FUR FELT SUPERLIGHT				000 black	005 black hairy	021 light grey mélé	022 light grey hairy	081 anthra mélé	082 anthra hairy	
131 birch mélé	132 birch hairy	201 beige mélé	202 beige hairy	540 pink	542 pink hairy	570 aubergine	571 aubergine hairy			
601 olive mélé	602 olive hairy	615 sage	617 sage hairy	851 brown mélé	852 brown hairy	921 blue mélé	922 blue hairy			
950 royal	951 royal hairy	970 navy	975 navy hairy	HAND-FELTED WOOL		000 black	020 light grey	070 grey		
080 anthra	200 beige	400 red	560 wine	600 olive	850 brown	950 royal				
WOOL FELT LIGHT				000 black	021 light grey mélé	080 anthra	081 anthra mélé	201 beige mélé	370 mustard	390 gold
600 olive	701 green mélé	830 chestnut	851 brown mélé	970 navy	WOOL FELT SOFT		021 light grey mélé	071 grey mélé		
081 anthra mélé	600 olive	750 stone	870 dark brown	021 light grey mélé	071 grey mélé	081 anthra mélé	600 olive			
750 stone	870 dark brown	WOOL FELT SUÈDE		000 black	080 anthra	390 gold	600 olive	830 chestnut		
970 navy										



Traveller GRAF ALESSIO
Wool felt
55-61 cm
CM595



Cloche DUKE SEPP
Wool felt
56-60 cm
CM594



Traveller ART LEE
Wool felt
55-59 cm
CM564



Gentleman's hat UDO
Wool felt
56-62 cm
CM544



Gentleman's hat GRAF THEO
Wool felt
56-62 cm
CM546



Trilby KARL
Wool felt
55-61 cm
CM548



Pork pie PRINZ BODO
Wool felt
56-60 cm
CM566



Traveller ART GRAF
Wool felt
55-60 cm
CM567



Gentleman's hat GRAF UDO
Wool felt
56-62 cm
CM580



Trilby KARL
Wool felt
55-61 cm
CM581



Trilby KARL
Wool felt suède
55-61 cm
CM587



Traveller ART LEE
Wool felt suède
55-59 cm
CM588

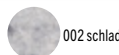


Gentleman's hat GRAF UDO
Wool felt suède
56-62 cm
CM589

WOOL FELT



000 black



002 schladming grey



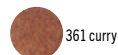
080 anthra



081 anthra mélé



130 birch



361 curry mélé



390 gold



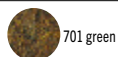
400 red



570 aubergine



600 olive



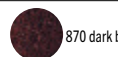
701 green mélé



835 taupe



851 brown mélé



870 dark brown



910 ciel



950 royal

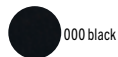


960 jeans

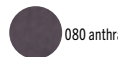


970 navy

WOOL FELT SUÈDE



000 black



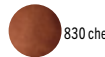
080 anthra



390 gold



600 olive



830 chestnut



970 navy



Cap TED
Irish tweed hb
M, L
CS895



Cap JAMIE
Irish tweed hb
55-61 cm
CS856



Cap BODE
Irish tweed hb
55-61 cm
CS857



Cap INGA
Irish tweed hb
54-60 cm
CS858



Bucket hat WALTER
Irish tweed hb
55-61 cm
CS859



Cap POPEYE
Irish tweed
55-61 cm
CS860



Cap BRAD
Irish tweed
55-61 cm
CS861



Cap JAMES
Tweed herring-bone
55-61 cm
CS739



Cap JAMIE
Moleskin
55-61 cm
CS828



Cap POPEYE
Moleskin
55-61 cm
CS829



Cap BASE
Moleskin
M, L
CS897

IRISH TWEED



070 grey



080 anthra



700 green



850 brown



905 blue

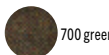
IRISH TWEED HB



070 grey



080 anthra



700 green



850 brown



905 blue

TWEED HERRING-BONE

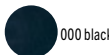


070 grey



850 brown

MOLESKIN



000 black



600 olive



750 stone



850 brown



970 navy



Cap BASE
Corduroy
M, L
CS878



Cap BASE
Corduroy
M, L
CS891



Docker FRISO
Corduroy
one size
CS889



Cap YUJI
Corduroy
55-61 cm
CS879



Bucket hat JOOST
Corduroy
55-61 cm
CS880



Cap BASE
Loden
M, L
CS822



Cap BASE
Loden
M, L
CS892



Cap HIPHOP
Loden
one size
CS824



Cap HIPHOP
Loden fleece
one size
CS893



Docker FRISO
Loden
one size
CS890



Cap BASIL
Loden
55-61 cm
CS863



Cap STORM
Loden fleece
55-61 cm
CS866



Beret NESSIE
Loden fleece
54-60 cm
CS868



Fold-up beanie KEX
Loden fleece
54-61 cm
CS881



Hood scarf ANDA
Loden fleece
one size
CS882

CORDUROY	000 black	070 grey	200 beige	270 camel	560 wine	600 olive	945 petrol
970 navy	LODEN	000 black	071 grey mélé	081 anthra mélé	201 beige mélé	460 terra	570 aubergine
615 sage	660 loden	770 fir	830 chestnut	870 dark brown	915 danube	970 navy	LODEN FLEECE
000 black	070 grey	130 birch	400 red	520 old rose	560 wine	700 green	850 brown
960 jeans	EMBROIDERED LETTER	M 000 black	M 011 grey shiny	M 220 natural	M 300 yellow	M 370 mustard	
M 400 red	M 430 orange	M 510 rose	M 611 green shiny	M 700 green	M 905 blue		



Russian EMI
Fake goat
54-60 cm
CF323



Cloche HEDDA
Fake goat
54-60 cm
CF324



Fold-up beanie TORIN
Sherpa wool recycled
55-61 cm
CF314



Cap UGO
Sherpa wool recycled
55-61 cm
CF315



Bucket hat WALT
Sherpa wool recycled
55-61 cm
CF316



Beanie ALPIN
Sherpa wool
54-60 cm
CF318



Beanie LIAM
Sherpa wool
55-61 cm
CF319



Bucket hat JOOST
Sherpa wool
55-61 cm
CF321

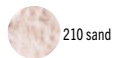


Russian ANDOR
Sherpa wool
55-61 cm
CF322

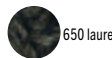
FAKE GOAT



000 black



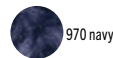
210 sand



650 laurel

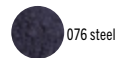


910 ciel



970 navy

SHERPA VELOUR



076 steel



270 camel



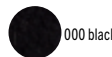
460 terra



905 blue



SHERPA WOOL



000 black



076 steel



270 camel



460 terra



570 aubergine



615 sage



620 pea



905 blue



SHERPA WOOL RECYCLED



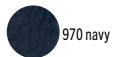
220 natural



600 olive



835 taupe



970 navy



Beanie TESSA
Rabbit sheared
54–60 cm
CP638



Beanie LIAM
Rabbit sheared
55–61 cm
CP643



Fold-up beanie PEPPi
Toscana lamb
55–61 cm
CP634



Fold-up beanie EDI
Toscana lamb
55–61 cm
CP656



Russian EMIL
Toscana lamb
55–61 cm
CP657



Bucket hat POL
Lambskin
54–60 cm
CP658



Beanie TESS
Lambskin
54–60 cm
CP654



Ear muffs JANIS
Lambskin
one size
CP661



Fold-up beanie NINA 6
Lambskin
55–61 cm
CP611



Cap SNOW
Lambskin
55–61 cm
CP660



Russian ANDREW
Lambskin
55–62 cm
CP626



Fold-up beanie TULLO
Curly lamb
55–61 cm
CP655

CURLY LAMB	000 black	080 anthra	270 camel	870 dark brown	970 navy	LAMBSKIN	000 black
080 anthra	200 beige	390 gold	400 red	415 tangerine	570 aubergine	650 laurel	835 taupe
870 dark brown	950 royal	970 navy	RABBIT SHEARED	000 black	065 feh	076 steel	080 anthra
140 ecru	600 olive	830 chestnut	870 dark brown	970 navy	TOSCANA LAMB	000 black	200 beige
210 sand	600 olive	970 navy					



Beanie BEN
Cashmere recycled
S, L
CS900



Fold-up beanie TONY
Cashmere recycled
S,L
CS901



Fold-up beanie MARK
Cashmere recycled
S,L
CS902



Hood ROBYN
Cashmere recycled
one size
CS903



Hood JAEL
Cashmere recycled
one size
CS904



Head band ASHLEY
Cashmere/wool
54-60 cm
CS831



Turban OMAR
Cashmere/wool
54-60 cm
CS808



Fold-up beanie AMORE
Fat wool hand-knitted
one size
CS832



Beanie AMADEO
Fat wool hand-knitted
one size
CS833



Head band AMAR
Fat wool hand-knitted
one size
CS842



Beanie SERANO
Lambswool hand-knitted
one size
CS869



Fold-up beanie LENNON
Lambswool hand-knitted
one size
CS870

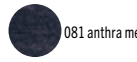
CASHMERE RECYCLED



000 black



071 grey mélé



081 anthra mélé



140 ecru



201 beige mélé



270 camel

480 bordeaux



510 rose



600 olive



770 fir



851 brown mélé



970 navy

CASHMERE/WOOL



000 black

071 grey mélé



125 gypsum



201 beige mélé



570 aubergine



851 brown mélé

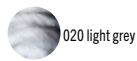


970 navy

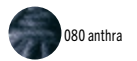
FAT WOOL HAND-KNITTED



000 black



020 light grey



080 anthra



100 white



200 beige



270 camel

400 red



460 terra



530 lilac



600 olive



835 taupe



850 brown



910 ciel



960 jeans

970 navy

LAMBSWOOL HAND-KNITTED



000 black



080 anthra



140 ecru



200 beige



350 yolk

400 red



430 orange



530 lilac



570 aubergine



615 sage



640 grass



780 bottle



830 chestnut

870 dark brown



910 ciel



945 petrol



950 royal



970 navy



980 midnight



Head band SRI
Baby alpaca hand-knitted
one size
CS836



Fold-up beanie STEFF
Baby alpaca hand-knitted
one size
CS838



Beret LAURA
Baby alpaca hand-knitted
one size
CS907



Beanie UTPAL
Cashmere hand-knitted
one size
CS871



Fold-up beanie BIRBAL
Cashmere hand-knitted
one size
CS872



Fold-up beanie short DAVID
Cashmere hand-knitted
one size
CS908



Head band MOTI
Cashmere hand-knitted
one size
CS874



Beanie TODD
Baby merino hand-knitted
one size
CS885



Fold-up beanie STEVE
Baby merino hand-knitted
one size
CS821



Fold-up beanie SEAN
Baby merino hand-knitted
one size
CS796



Head band ISLA
Baby merino hand-knitted
one size
CS797

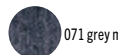
BABY ALPACA HAND-KNITTED



000 black



021 light grey mélé



071 grey mélé



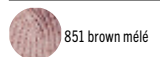
140 ecru



201 beige mélé



480 bordeaux



851 brown mélé



970 navy

BABY MERINO HAND-KNITTED



000 black



070 grey



140 ecru



270 camel



440 fire



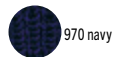
480 bordeaux



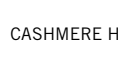
600 olive



920 aqua



970 navy



000 black

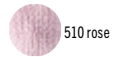
CASHMERE HAND-KNITTED



070 grey



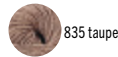
100 white



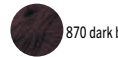
510 rose



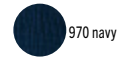
600 olive



835 taupe



870 dark brown



970 navy



Cloche HEDDA
Sherpa wool recycled
55–61 cm
T23801



Bucket hat LASSE
Lambskin
55–61 cm
T23804



Hunting hat OTTO KARL
Hand-felted wool
56–61 cm
T20801



Trilby KARL
Wool felt light
56–61 cm
T19801



Traveller SEPP GRAF H
Wool felt light
55–61 cm
T20803



Traveller ART LEE H
Wool felt light
56–60 cm
T20804



Gentleman's hat GRAF UDO H
Antelope felt
56–62 cm
T19806



Gentleman's hat GRAF THEO H
Antelope felt
56–62 cm
T19804



Gentleman's hat UDO H
Antelope felt
56–62 cm
T19805

TRACHT

ANTELOPE FELT	000 black	060 elephant	080 anthra	130 birch	140 ecru	200 beige	390 gold
421 rouge	460 terra	470 oxblood	540 pink	560 wine	600 olive	780 bottle	835 taupe
870 dark brown	935 cobalt	970 navy	HAND-FELTED WOOL	000 black	020 light grey	070 grey	080 anthra
200 beige	400 red	560 wine	600 olive	850 brown	950 royal	LAMBSKIN	000 black
080 anthra	200 beige	390 gold	400 red	415 tangerine	570 aubergine	650 laurel	835 taupe
870 dark brown	950 royal	970 navy	SHERPA WOOL RECYCLED	220 natural	600 olive	835 taupe	
970 navy	WOOL FELT LIGHT	000 black	021 light grey mélé	080 anthra	081 anthra mélé	201 beige mélé	370 mustard
390 gold	600 olive	701 green mélé	830 chestnut	851 brown mélé	970 navy		



Traveller RESI
Fur felt
55–60 cm
CT806



Trilby KARL
Wool felt
56–61 cm
T19807



Pork pie PRINZ BODO
Wool felt
56–60 cm
T19809



Cap BAZ
Wool felt
55–60 cm
T19810



Cap BAZ
Wool felt
55–60 cm
T21801



Brush medium (pig)
CG084



Brush large (antelope)
CG085



Feather small
CG086



Feather bundle medium
CG090

FUR FELT	000 black	021 light grey mélé	042 light grey hairy	071 grey mélé	072 grey hairy	076 steel	081 anthra mélé
082 anthra hairy	131 birch mélé	201 beige mélé	202 beige hairy	211 sand mélé	212 sand hairy	440 fire	480 bordeaux
615 sage	660 loden	701 green mélé	770 fir	851 brown mélé	852 brown hairy	880 santos	895 mocca
960 jeans	970 navy	WOOL FELT	000 black	002 schladming grey	080 anthra	081 anthra mélé	130 birch
361 curry mélé	390 gold	400 red	570 aubergine	600 olive	701 green mélé	835 taupe	851 brown mélé
870 dark brown	910 ciel	950 royal	960 jeans	970 navy			



PAPER BAG SMALL
Paper
h: 25 cm
w: 32 cm
d: 11 cm
WM10



PAPER BAG
Paper
h: 36 cm
w: 40 cm
d: 12 cm
WM05



FOLDABLE HATBOX SMALL
Paper
h: 30 cm
w: 30 cm
d: 12 cm
WM03



FOLDABLE HATBOX LARGE
Paper
h: 38 cm
w: 38 cm
d: 18 cm
WM02



ROLL BOX Paper
Ø: 9,5 cm
h: 30 cm
WM04



GIFT BOX
Paper
h: 7 cm
w: 20 cm
d: 30 cm
WM07



HATBOX ROUND
Paper
Ø: 45 cm
h: 18 cm
WM01



HAT BRUSH
ash wood/horse hair
size: 6x9 cm
WM06

MÜHLBAUER Hutmanufaktur seit 1903

Jeder Hut wird nach handwerklicher Tradition in der Mühlbauer-Werkstätte in Wien hergestellt. Und zwar aus voller Überzeugung. Denn beste Qualität bei Material und Verarbeitung kann nur von Hand erzeugt werden. Die Hutmanufaktur Mühlbauer verbindet das Handwerk mit zeitgenössischem Design. Klaus Mühlbauer, Hutmacher in der vierten Familiengeneration, entwirft die Hut-Kollektionen gemeinsam mit den Designerinnen Nora Berger und Selma Klima. Das Experiment wird dabei bewusst gesucht, um konsequent Neues zu schaffen. Mühlbauer hat das Zeitgeschehen im Blick, denn es geht darum, Kopfbedeckungen zu kreieren, die in unseren Alltag und zu unserer Bekleidung passen. „Das Faszinierende am Hutmachen ist der gestalterische Eingriff am Kopf – der sichtbarsten Stelle des menschlichen Körpers. Bei Anwendung des entsprechenden Fingerspitzengefühls und Knowhows kann man dabei wahre Wunder bewirken: stilbildend und identitätsstiftend.“

Klaus Mühlbauer

MÜHLBAUER hat makers since 1903

Every hat is made according to artisan tradition in the Mühlbauer workshop in Vienna. Because we are convinced this produces the very best results. Because the highest quality material and craftsmanship can only be produced by hand. The Mühlbauer hat manufactory combines craft with contemporary design. Klaus Mühlbauer, the fourth generation in his family to create hats, designs the collections in collaboration with designers Nora Berger and Selma Klima. They deliberately seek experimentation in order to consistently create something new. Current affairs and styles are constantly monitored by Mühlbauer as it is all about creating headwear that fits seamlessly into everyday life. „The fascinating thing about hat making is the creative intervention on the head – the most visible part of the human body. With dexterity, sensitivity and know-how, you can work wonders: style-forming and identity-creating.“

Klaus Mühlbauer

Mühlbauer Hut und Mode GmbH & Co. KG
Franz-Josefs-Kai 15
1010 Vienna, Austria
Tel +41 1 533 52 69
office@muehlbauer.at
www.muehlbauer.at

Graphic design: Nina Ober
Text: Eva Mühlbauer
Translation: Sibylle Laubscher

Campaign:
Concept & photos: Maria Ziegelböck
Moving image: Anahita Asadifar
Assistant: Oskar Ott
Styling: Lis Füreder
Models: Mühlbauer team

Products:
Photos: Nina Kowalska

